



ALEXANDER
LAMONT

LE MUR

LE MUR



ALEXANDER
LAMONT

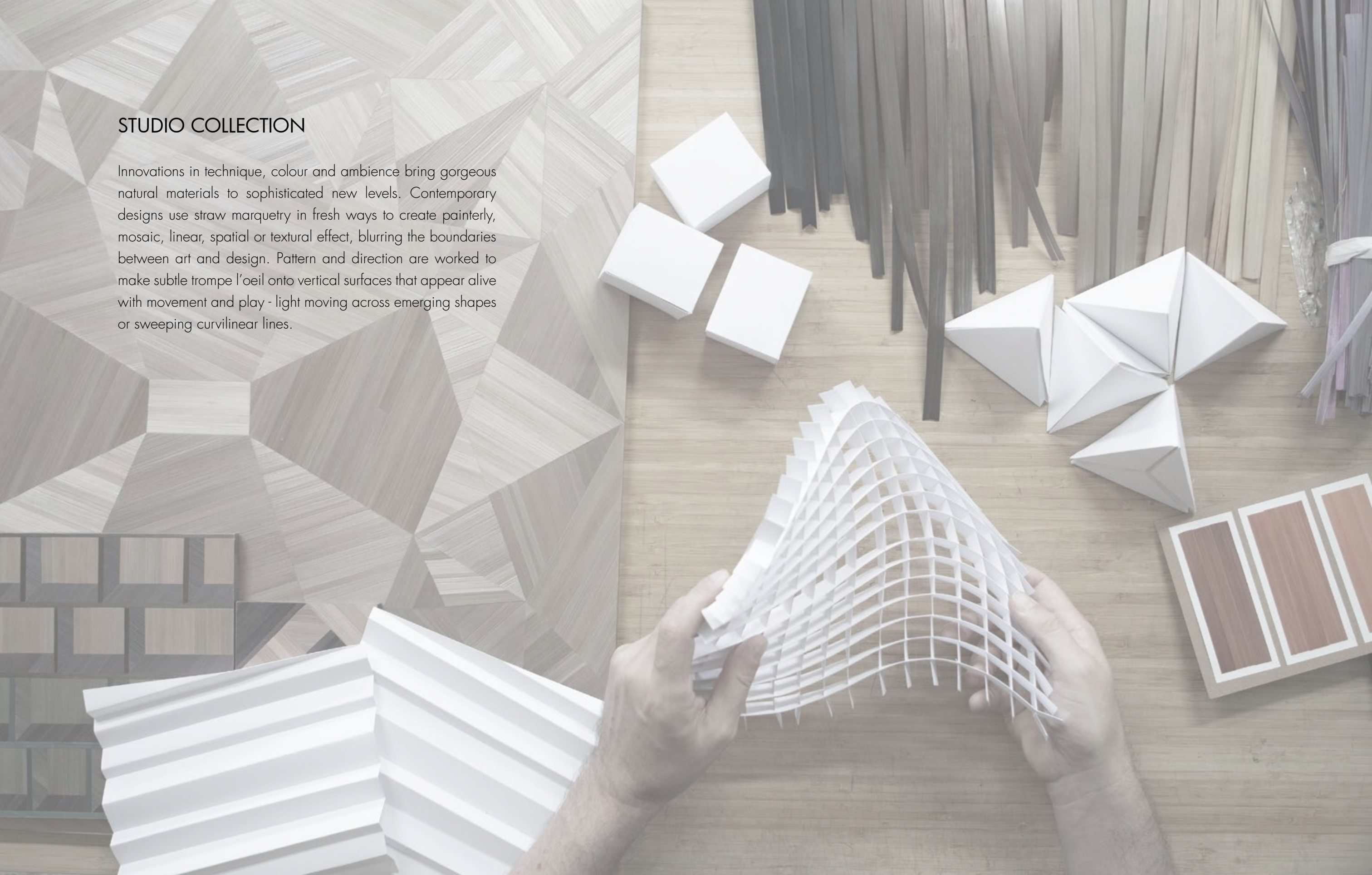
WHERE TRADITION EMBRACES THE AVANT GARDE

Alexander Lamont's designs are works of vitality, soul and character. The unique, hand-crafted pieces made with noble materials bring with them a sense of journey and discovery while communicating playfulness, texture and refined quality.

The Le Mur collection for walls allows designers to infuse spaces with exquisite handwork, texture and dimensionality. Vertical surfaces are brought to life with precious shagreen, hand-cracked and burnished gesso and straw marquetry. Every square inch is controlled from preparing the raw material to dyeing and inlay, in Alexander Lamont's renowned workshops. The finished works express a particular approach to innovation in design and technique; one that uncompromisingly pushes the boundaries of rare and hard-won traditions, maintaining exquisite quality while bringing contemporary, fresh ideas to long-adored materials.

STUDIO COLLECTION

Innovations in technique, colour and ambience bring gorgeous natural materials to sophisticated new levels. Contemporary designs use straw marquetry in fresh ways to create painterly, mosaic, linear, spatial or textural effect, blurring the boundaries between art and design. Pattern and direction are worked to make subtle trompe l'oeil onto vertical surfaces that appear alive with movement and play - light moving across emerging shapes or sweeping curvilinear lines.





Drift I

A surface of lines that rises, swells and falls like the wake of a ship. Corrugated and gliding, Drift makes gentle patterns that mix tonality and light creating a contemporary artwork for rooms and accent walls. Available in Verdigris and Wisteria.

Panels 24" x 24" (61cm x 61cm) are made in 2 patterns that will be delivered in equal quantities according to project requirements.





Drift II

Wisteria straw applied in vibrant tonal harmony.

Panels 24" x 24" (61cm x 61cm) are made in 2 patterns that will be delivered in equal quantities according to project requirements.





Pierrot

Pierrot is a dancing arrangement of musical whimsy and silent mime that moves in the light between shaded tones of taupe and chocolate.

Panel 24" x 24" (61cm x 61cm)





Tashi I

Tashi is inspired by the traditional textiles of the himalayas; soft repeating woven lines are reimagined in lustrous straw and a wonderful luminosity and sense of depth emerges. Contrasting shell and colours are inlaid into the pattern like 'loose threads' that amuse and catch the eye.

Panel 24" x 24" (61cm x 61cm)





Tashi II

Wisteria straw is carefully inlaid in different hues and tones to balance and enhance the vibrancy of the design.

Panel 24" x 24" (61cm x 61cm)

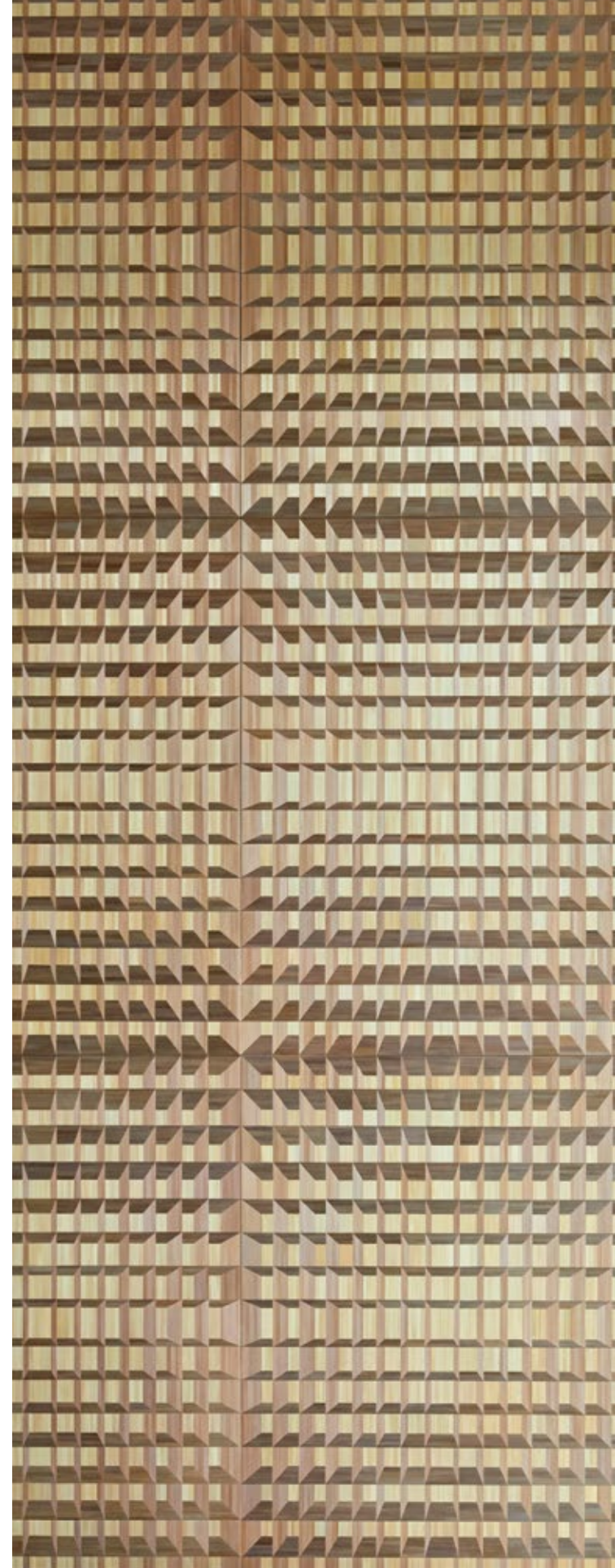




Soleil

Sun shining through a lattice was the inspiration for Soleil; the gorgeous reflectivity of straw allows different plains to hold light or shine forth. The linear form gives a sense of depth looking through to an evening sun.

Panel 24" x 32" (61cm x 81.3cm)





Stepping Stones

A wall of conceptual and contemporary art? Rising and falling in subtle natural tones, Stepping Stones creates a trompe l'oeil of three-dimensional repeating plains that makes a unique accent wall.

Panel 24" x 24" (61cm x 61cm)





Tryst I

Inspired by the mosaics and tiles of ancient Rome, Tryst has a classical aspect alongside a contemporary sense due to the lightness and reflectivity of straw. The feeling of shapes emerging and plains receding creates a wonderfully alluring drama. Available in a natural palette or in tones of Wisteria and Verdigris.

Panels 24" x 24" (61cm x 61cm) are made in 2 layouts to connect perfectly that will be delivered in equal quantities according to project requirements.





Tryst II

Tones of Wisteria and Verdigris are woven together to create a warmly saturated palette reminiscent of Renaissance Italy.

Panels 24" x 24" (61cm x 61cm) are made in 2 layouts to connect perfectly that will be delivered in equal quantities according to project requirements.





Grove

Tall bamboo-like spires in varying tones have been interwoven with fine polychrome details that give a subtle crafted pop to this simple natural design.

Panel 24" x 32" (61cm x 81.3cm)





Hide and Seek

Complex yet playful, Hide and Seek takes the linearity of Erasmo Figini's original artwork and adds a dash of colour. The ruby red straw lines contrast with the earthier tones of bronze and beige to create a vibrant graphical surface.

Panels 24" x 24" (61cm x 61cm) are made in 2 patterns that will be delivered in equal quantities according to project requirements.



Sonja I & II - Formal Composition

Inspired by the works of Sonia Delaunay, this enigmatic design by Anotnio da Motta Leal for Alexander Lamont presents large fluid shapes and lines within curvilinear fields of rich natural colour. Sonja is available in two colourways, the first a blend of warm taupes and browns and the second a mix of vibrant greens and yellows.

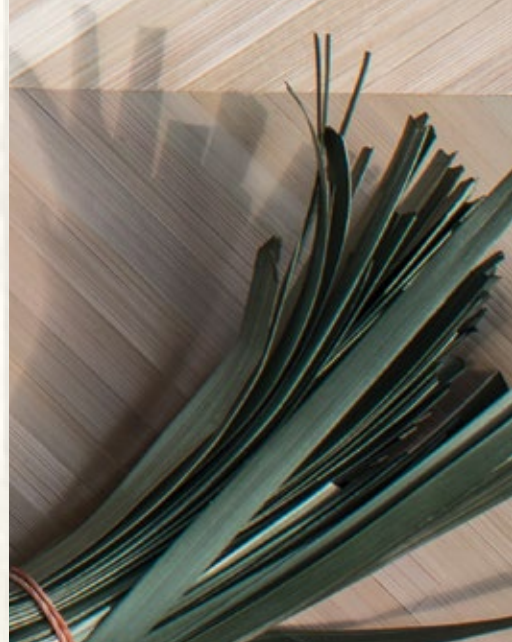
Panels 24" x 24" (61cm x 61cm) are made in 4 patterns that will be delivered in equal quantities according to project requirements. See panel pages at back for details.



Sonja I & II - Flowing Composition

The Sonja design is composed of 4 panels of 24" x 24" (61cm x 61cm) that then repeat.
See panel pages at back for details.





THE GENTLE ART OF STRAW MARQUETRY

Straw is a seductive, versatile and strong natural material. It has been used historically to protect from the elements; woven into hats and parasols, and shuffled and thatched on the rooves of houses. It has been used to make things as diverse as shoes in Korea and baskets, dolls, rope, scarecrows, beehives and the targets for archery in Europe.

Perhaps the most beautiful use for this humble material from the fields, is the decorative art of straw marquetry that was brought to prominence during the early 20th century. Alexander Lamont has been producing furniture, lighting and wall panels using the ancient technique of straw marquetry since 2005. His workshop is the only place in the world that controls every aspect of the making of straw-marquetry, from receiving raw straw in sheafs from rural France, still muddy from the fields, to the washing, dyeing in many colours, splitting, ironing and final inlay of the gleaming finished 'ribbons'. In his workshop, graduates from Thailand's leading fine art and craft schools work on new techniques and designs to take the traditional process forward into new refined and contemporary directions.

Having fallen largely into oblivion by the late nineteenth century, the craft of straw marquetry was re-introduced into France around 1925 by modernist decorators of the Art Deco period including Andre Groult and Jean-Michel Frank, who used the natural yellow material lavishly on walls.

To make straw marquetry, stems of natural, cured rye straw from France are split, flattened, softened, dyed and scraped or ironed into lustrous ribbons. The ribbons are applied piece-by-piece, edge-to-edge until the surface is covered. Natural straw has a brilliant reflective quality that appears to emit light creating soft yet vibrant fields of colour and texture for the walls.

The image shows a close-up, high-angle view of a textured surface. It features a grid-like pattern of rectangular sections. Each section is composed of a dark, possibly black, material with a fine, vertical ribbed texture. These sections are separated by borders made of a lighter, metallic material, likely gold or silver leaf. The metallic borders are uneven and show signs of being rubbed or worn, revealing a lighter, straw-like material underneath. The overall effect is one of luxury and intricate craftsmanship, with the play of light and shadow emphasizing the textures and the layered nature of the materials.

METALLICS COLLECTION

offers surfaces that exude elegance with their luminous reflectivity and calm luxe. Precious leaves in contemporary gold and warm silver are laid over a sheet of natural straw or applied in lines to create contrast. The gold or silver is then gently rubbed to reveal the subtle straw beneath. This creates a changing effect as the light meets the surface.



Argento

Argento exudes a wonderful 'warm coolness' achieved through the gentle rub-through revealing the straw beneath. A special finish is applied that prevents oxidation of the silver.

Argento is made in Ligne and Étoile patterns
Panels are 12" x 12" (30.5cm x 30.5cm) or
24" x 24" (61cm x 61cm)



Mercury Gold

Plains of straw in Ligne and Étoile sunbursts are covered with pure gold leaf and rubbed gently to reveal the natural straw creating an exquisite contemporary surface. The panels are sealed giving great durability.

Mercury Gold is made in Ligne and Étoile patterns
Panels are 12" x 12" (30.5cm x 30.5cm) or
24" x 24" (61cm x 61cm)





Labirinto I

The Labirinto pattern was created by famed Como textile designer Erasmo Figini for Alexander Lamont. Labirinto I layers the natural vibrancy of straw marquetry with fine lines of hand-applied Mercury Gold leaf. As light or the viewer moves, different iterations of the design become visible: a tribal textile appears with strong archaic lines that then fades as the delicate lines of the gold appear creating a precise graphic sensibility.

Panels 24" x 24" (61cm x 61cm) are made in 2 patterns that will be delivered in equal quantities according to project requirements.





Labirinto II

Labirinto II brings the colours of night together in a sensual masculine surface. Ebony straw and silver leaf play together in nesting lines and backgrounds of shadow and light.

Panels 24" x 24" (61cm x 61cm) are made in 2 patterns that will be delivered in equal quantities according to project requirements.



SURFACE OF THE SAINTS

Gesso is a material first used in medieval Europe as a surface for painting and gilding over wood before applying expensive gold leaf and natural pigments onto religious art. Ground lapis and malachite; cinnabar reds and tyrian purple would have been painted onto the sleek and smooth white surface made from rabbit-skin glue and plaster of Paris.

Alexander Lamont has taken this ancient white material as a luminous surface in its own right. By applying it onto canvas and then lifting, cracking, scoring and carving the surface before fixing onto panels and then burnishing by hand, we make walls that gleam like polished ivory or create tactile elegance through filigree-fine craquelure. Every panel is different and shows the tiny decisions and practice of our skilled artisans.



CLASSIC COLLECTION

The Le Mur Classics are a collection of wall panels in straw marquetry, gesso and shagreen in simple designs and elegant colourways. Alexander Lamont's signature materials and finishes are presented in their purest form. The Classics collection creates an understated atmosphere enhanced by the texture, depth and quiet luxe of crafted precious materials.



Ivoire

During the 1920's, ivory was used on luxurious furniture. Sliced thinly, it would gradually crack in beautiful ways. We have followed exactly these lines and cracks to create large scale gesso panels that we feel are the closest surface to real ivory it is possible to achieve. With our 'Ivoire', everything is created by the hand of the skilled gesso maker.

Panels 24" x 32" (61cm x 81.3cm) are made in 3 patterns that will be delivered in equal quantities according to project requirements.





Lace

Lace requires meticulous care and attention in creating fine cracks that are consistent but not too consistent. The idea is to build a linear tracery that is full of tiny imperfections and make a constantly varying texture and interest in the surface. Burnishing with agate stones polishes the surface by hand before a protective clear layer is applied.

Panels 24" x 32" (61cm x 81.3cm) are all subtly different in crack placement but are made to sit beautifully together.





Perle

Alexander Lamont's Perle wall tiles create luxurious wall surfaces made from raw natural chocolate or natural ivory shagreen skins. These are the exact same tones and use the same hand applied methods of the Art Deco period.

Tiles are 6" x 8" (15.25 cm x 20.3 cm)
and in Natural Chocolate or Natural Speckle Shagreen.



Forêt

Forêt wall panels have sweeping lines of straw criss-crossing to create a strong impression of depth and the sensation of being drawn into a forest. The changes in light and dimension as one moves around these panels are striking and beautiful.

Panels are 24" x 24" (61 cm x 61 cm).
Available in Ebony, Beechwood and Bronze straw.





Havana

Warm tones of bronze and ebony straw are combined in the Havana wall panels to create a tailored pattern of shimmering lines that can be placed in a vertical or horizontal alignment.

Panels 24" x 24" (61 cm x 61 cm).

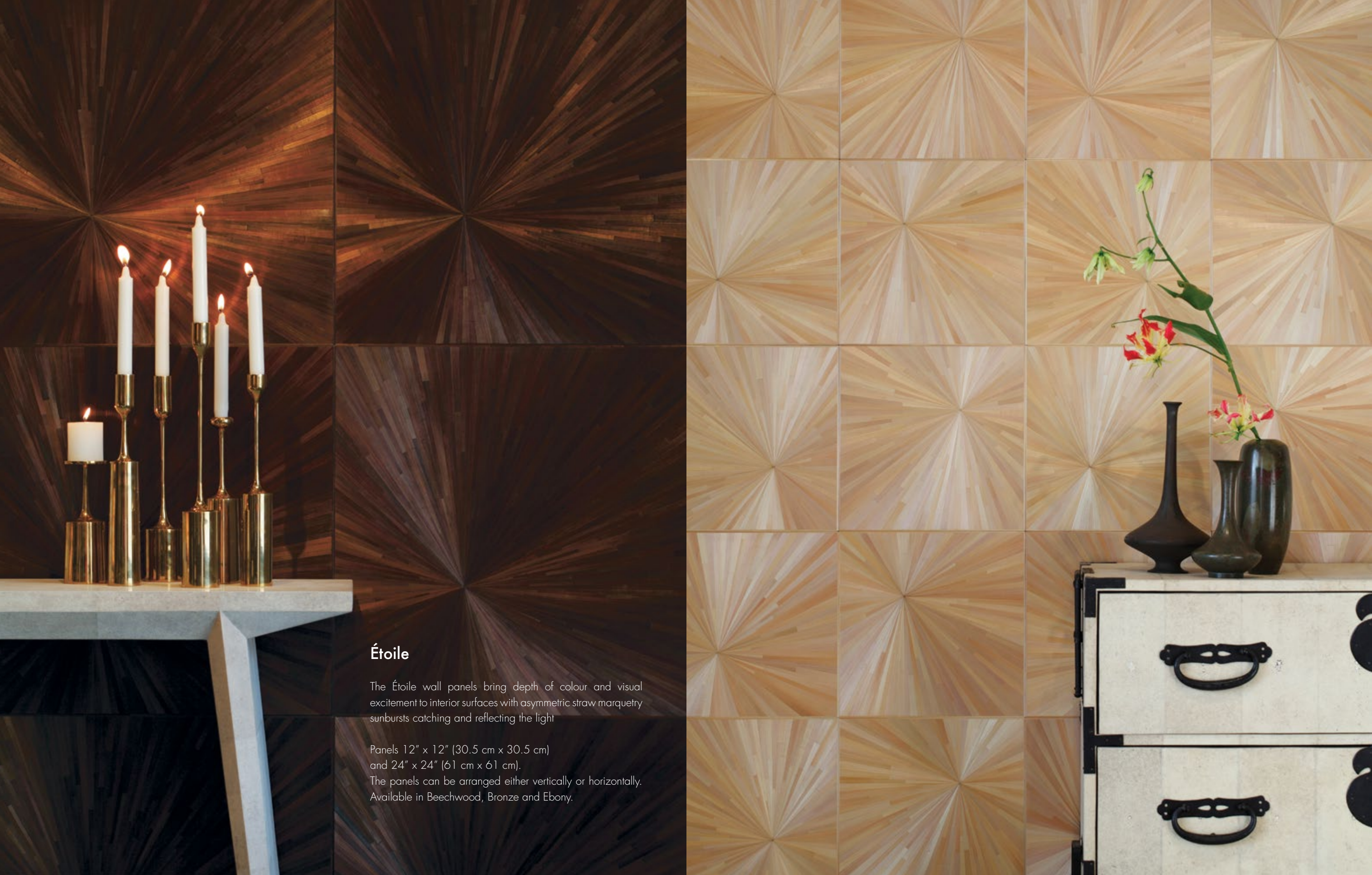


Ligne

Alexander Lamont's Ligne wall panels bring plains of beautifully reflective tones into special interiors. The warm colours are underpinned by a rhythmic linearity that is created by hand-inlaid ribbons of straw reminiscent of the great drawing rooms of the Jazz age.

Panels 12" x 12" (30.5 cm x 30.5 cm)
and 24" x 24" (61 cm x 61 cm).
The panels can be arranged either vertically or horizontally.
Available in Beechwood, Bronze and Ebony.





Étoile

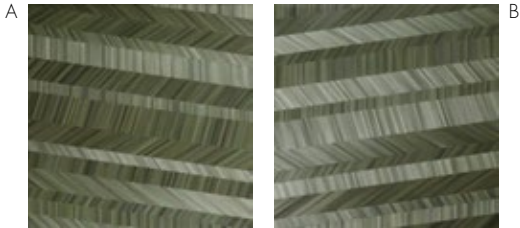
The Étoile wall panels bring depth of colour and visual excitement to interior surfaces with asymmetric straw marquetry sunbursts catching and reflecting the light

Panels 12" x 12" (30.5 cm x 30.5 cm)
and 24" x 24" (61 cm x 61 cm).

The panels can be arranged either vertically or horizontally.
Available in Beechwood, Bronze and Ebony.

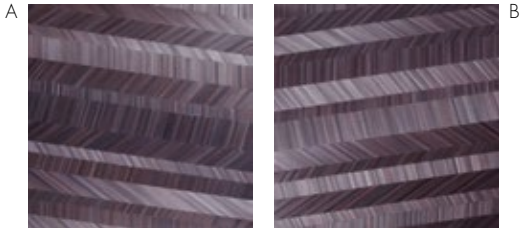
STUDIO COLLECTION

DRIFT I



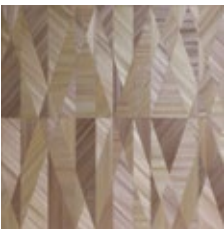
2 patterns supplied in equal quantities per order.

DRIFT II



2 patterns supplied in equal quantities per order.

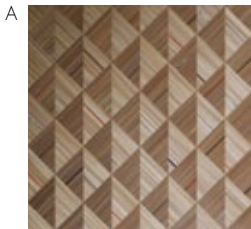
PIERROT



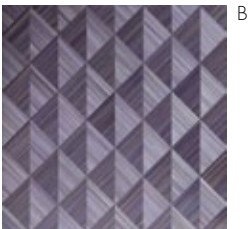
STEPPING STONES



TASHI I



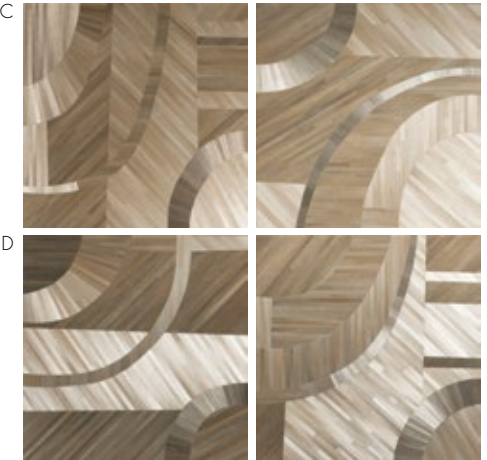
TASHI II



SONJA I



Formal Arrangement



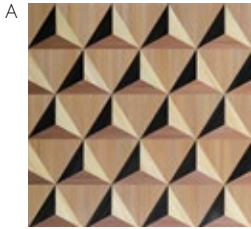
Flowing Arrangement

HIDE AND SEEK

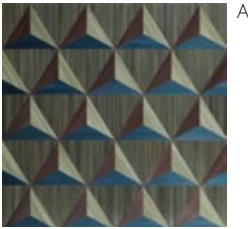


2 patterns supplied in equal quantities per order.

TRYST I



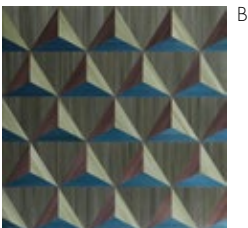
TRYST II



B



B



2 patterns supplied in equal quantities per order.

SONJA II



Formal Arrangement



Flowing Arrangement

SOLEIL

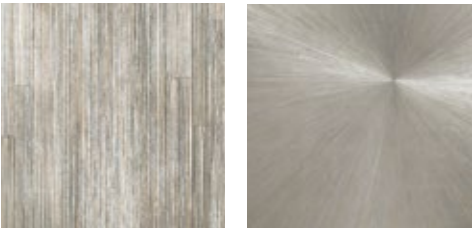


GROVE



METALLICS COLLECTION

ARGENTO



MERCURY GOLD



LABIRINTO I



2 patterns supplied in equal quantities per order.

LABIRINTO II



2 patterns supplied in equal quantities per order.

CLASSIC COLLECTION

IVOIRE



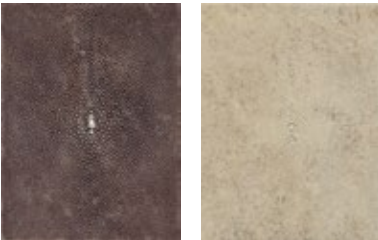
3 patterns supplied in equal quantities per order.

LACE



Crackle patterns are subtly random

PERLE

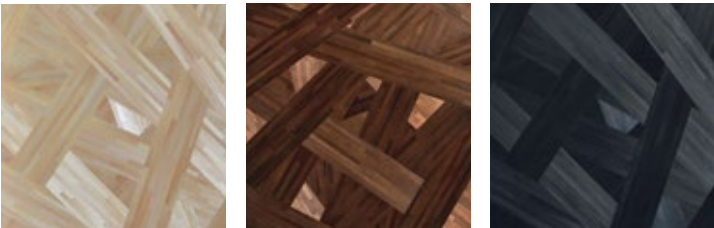


Natural Chocolate

Natural Speckle

CLASSIC COLLECTION

FORÊT

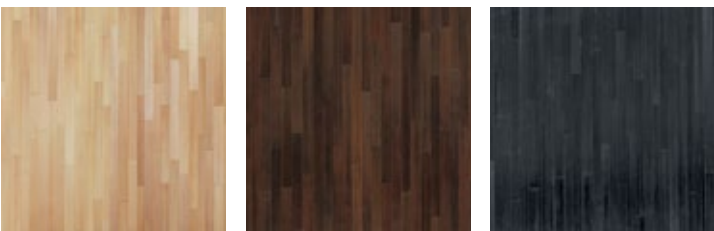


Beechwood

Bronze

Ebony

LIGNE

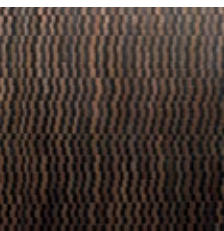


Beechwood

Bronze

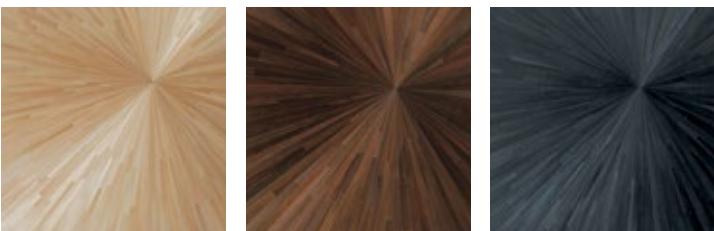
Ebony

HAVANA



Bronze & Ebony

ÉTOILE



Beechwood

Bronze

Ebony

Colour / Finish Options

	Beechwood	Bronze	Ebony	Argento	Mercury Gold	Natural Speckle	Natural Chocolate	Gesso	Unique
Drift I & II									●
Pierrot									●
Tashi I & II									●
Soleil									●
Stepping Stones									●
Tryst I & II									●
Grove									●
Hide and Seek									●
Sonja I & II									●
Labirinto I & II									●
Ivoire								●	
Lace								●	
Perle						●	●		
Forêt	●	●	●						
Havana									●
Ligne	●	●	●	●	●				
Étoile	●	●	●	●	●				

Panel Size

	6" x 8" 15.25 x 20.3cm	12" x 12" 30.5 x 30.5cm	24" x 24" 61 x 61cm	24" x 32" 61 x 81cm
Drift I & II			●	
Pierrot			●	
Tashi I & II			●	
Soleil				●
Stepping Stones			●	
Tryst I & II			●	
Grove				●
Hide and Seek			●	
Sonja I & II			●	
Labirinto I & II			●	
Ivoire				●
Lace				●
Perle	●			
Forêt			●	
Havana			●	
Ligne		●	●	
Étoile		●	●	

Sub-strate Materials

	6" x 8" 15.25 x 20.3cm	12" x 12" 30.5 x 30.5cm	24" x 24" 61 x 61cm	24" x 32" 61 x 81cm
Cement Board	●			
7.4mm HDF		●		
9mm MDF MR			●	●
18mm MDF MR				●
6mm Mineral Board*		●	●	●

Panel Size Tolerance

	+/- 3/64" +/- 1mm	+/- 1/16" +/- 1.5mm
Drift I & II	●	
Pierrot	●	
Tashi I & II	●	
Soleil	●	
Stepping Stones	●	
Tryst I & II	●	
Grove	●	
Hide and Seek	●	
Sonja I & II	●	
Labirinto I & II	●	
Ivoire	●	
Lace	●	
Perle		●
Forêt	●	
Havana	●	
Ligne	●	
Étoile	●	

* Recommended only for projects requiring fire-rating

Panel Thickness (Total)

	6" x 8" 15.25 x 20.3cm	12" x 12" 30.5 x 30.5cm	24" x 24" 61 x 61cm	24" x 32" 61 x 81cm
Drift I & II			9.5mm/3/8"	
Pierrot			9.5mm/3/8"	
Tashi I & II			9.5mm/3/8"	
Soleil			9.5mm/3/8"	
Stepping Stones			9.5mm/3/8"	
Tryst I & II			9.5mm/3/8"	
Grove			9.5mm/3/8"	
Hide and Seek			9.5mm/3/8"	
Sonja I & II			9.5mm/3/8"	
Labirinto I & II			9.5mm/3/8"	
Ivoire				18.5mm/3/4"
Lace				18.5mm/3/4"
Perle	8mm/5/16"			
Forêt			9.5mm/3/8"	
Havana			9.5mm/3/8"	
Ligne		8mm/5/16"	9.5mm/3/8"	
Étoile		8mm/5/16"	9.5mm/3/8"	

Panel Weight

	6" x 8" 15.25 x 20.3cm	12" x 12" 30.5 x 30.5cm	24" x 24" 61 x 61cm	24" x 32" 61 x 81cm
Drift I & II			3kg/6.5lbs	
Pierrot			3kg/6.5lbs	
Tashi I & II			3kg/6.5lbs	
Soleil				4kg/8.8lbs
Stepping Stones			3kg/6.5lbs	
Tryst I & II			3kg/6.5lbs	
Grove				4kg/8.8lbs
Hide and Seek			3kg/6.5lbs	
Sonja I & II			3kg/6.5lbs	
Labirinto I & II			3kg/6.5lbs	
Ivoire				7.5kg/16.5lbs
Lace				7.5kg/16.5lbs
Perle	350g/75oz			
Forêt			3kg/6.5lbs	
Havana			3kg/6.5lbs	
Ligne		700g/1.5lbs	3kg/6.5lbs	
Étoile		700g/1.5lbs	3kg/6.5lbs	

Fire-rating

	UL 723	ASTM E 84
Cement Board		
7.4mm HDF		
9mm MDF MR		
18mm MDF MR		
6mm Mineral Board*	●	●

* UL 723 ** ASTM E 84

PYC

Our straw marquetry has been independently tested to meet the following PYC codes:

IMO part 2 - Smoke Toxicity
IMO part 5 - Surface Flammability

For these projects we require the yacht builder to provide pre-fitted PYC substrates.

Handling and Installation

Le Mur wall panels should always be installed by a professional wall panel installer or tiler. Each group of wall panels is supplied with specific product handling and installation instructions. These must be read carefully and followed closely to ensure successful installation.

Maintenance

Le Mur wall panels should be touched as little as possible but if necessary can be cleaned to remove dust using a very soft brush. Fingerprints can be removed using a cloth dampened very lightly with clean water. Rub gently to remove fingerprints before buffing with a dry soft cloth. Do not use chemical cleaners or any other cleaning substances.

The surface of the Le Mur wall panels must be kept completely dry. They are not recommended for outdoor use or for use in wet rooms where direct contact with water/steam may occur.

Indications

Le Mur wall panels are made from natural materials and precious metal leaf that have been applied by hand. They display the irregularities and variations in colour and tone that form part of their natural beauty and hand process. Natural tones will also vary wonderfully in different light conditions.

Lead-Times, Pricing

We hold constantly changing but limited stocks of Le Mur wall coverings. Lead-times depend on the quantity of the order and will be provided upon receipt of actual order enquiries.

Pricing and full terms and conditions can be obtained by contacting the relevant Alexander Lamont office or partner found on the back cover of this catalogue.

Customization

We are able to customize the Le Mur collection and we will respond with feasibility, lead-times and prices once the specifics of the project have been received. Please contact the relevant Alexander Lamont office or partner found on the back cover of this catalogue.



Custom Étoile full wall in Beechwood

Alexander Lamont furniture and lighting is available in our Bangkok showroom and through our network of representatives and agents in the US, Europe, Asia and Middle East.

For other territories please contact us directly : enquiries@alexanderlamont.com

SHOWROOM

Guysorn Village

Tower 1 . 1st Floor
Ploenchit Road . Bangkok 10330
T: +66(0) 2656 1920
T: +66(0) 2656 1921
E: enquiries@alexanderlamont.com
W: alexanderlamont.com

NORTH AMERICA

Atlanta

R Hughes
351 Peachtree Hills Ave NE #320,
Atlanta . GA 30305
T: +1(0) 404 607 8877
E: ryan@r-hughes.com
W: r-hughes.com

Denver

John Brooks
601 South Broadway
Suite L . Denver . CO 80209
T: +1(0) 303 698 9977
E: info@johnbrooksinc.com
W: johnbrooksinc.com

Los Angeles

Jean de Merry
Pacific Design Center
8687 Melrose Ave. No.B653
West Hollywood . California 90069
T: +1(0) 323 655 9193
E: losangeles@jeandemerry.com
W: jeandemerry.com

Toronto

South Hill Home
146 Dupont Toronto . Ontario
ON M5R 1V2 . Canada
T: +1(0) 416 924 7224
E: sandra@southhillhome.com
W: southhillhome.com

Chicago

Jean de Merry
222 Merchandise Mart Plaza
Studio 1466 . Chicago . Illinois 60654
T: +1(0) 312 527 1800
E: chicago@jeandemerry.com
W: jeandemerry.com

Florida

Jerry Pair
South Florida Design Park 2862
Pershing St. Hollywood . FL 33020
T: +1(0) 954 923 3330
T: +1(0) 800 642 7247
E: infoflorida@jerrypair.com
W: jerrypair.com

New York

Angela Brown Limited
153 W 27th Street
New York . New York 10001
T: +1(0) 212 627 5757
E: info@ablnyc.com
W: angelabrownltd.com

Dallas

Jean de Merry
1505 Hi Line Drive
Dallas . Texas 75207
T: +1(0) 214 741 2888
E: dallas@jeandemerry.com
W: jeandemerry.com

Las Vegas

M | R Design Lab
5725 S. Valley View Boulevard
Ste.9 . Las Vegas . Nevada 89118
T: +1(0) 702 202 4550
E: maryrose@mrdesignlab.com
W: mrdesignlab.com

Scottsdale

John Brooks
2712 North 68th Street
Scottsdale . AZ 85257
T: +1(0) 480 675 8828
E: info@johnbrooksinc.com
W: johnbrooksinc.com

EUROPE

France

BePa Home Sarl
24 rue d’Aumale . Paris 75009
T: +33(0) 6 19 92 48 76
E: bepa2011@hotmail.fr
W: bepa-home.fr

United Kingdom

MILES X Alexander Lamont
Design Centre Unit G15A
Chelsea Harbour . G Floor North Dome
London SW10 OXE
T: +44(0) 7785 505 760
E: miles@milesdelange.com
W: milesdelange.com

ASIA PACIFIC & MIDDLE EAST

China

Domus Tiandi
3/F Jinbao Place . 88 Jinbao Street
Dongcheng District . Beijing
T: +86(0) 10 85 116 228
E: info@domustiandi.com
W: domustiandi.com

Japan

Ailes Creation
602 Ratio Tsukiji 1-10-11
Tsukiji . Chuo-ku
Tokyo 104-0045
T: +81(0) 090 1773 4128
E: mayumi@alexanderlamont.com
W: ailescreation.co.jp

Italy

Malatesta Fabrizio e c. S.a.s
Via Vincenzo Tiberio 64
00191 Roma
T: +39(0) 335 5262638
E: fmala71@gmail.com

U.A.E.

H&H
Office 705 . Sama Tower
Sheikh Zayed Road . Dubai
T: +971(0) 4 3888803
E: cristiano.b@h-h.ae
W: h-h.ae

Australia - Melbourne

Milgate Melbourne
21 Newton Street
Richmond VIC 3121
T: +61(0)4 1288 3739
E: alexanderlamont@milgate.com.au
W: milgate.com.au

Switzerland

Gianni Fedrigo
Seestrasse 161
8700 Kusnacht . Switzerland
T: +41(0) 43 499 62 60
E: gianni.fedrigo@bluewin.ch

Indonesia

Prodotti Indonesia
Jl. Duren Tiga No.33 Mampang
Jarkata . Selatan 12760
T: +62(0) 21 799 1521
E: info@prodotti-id.com
W: prodotti-id.com

Australia - Sydney

Milgate Sydney
S4, 5-11 Boundary Street
Rushcutters Bay NSW1
T: +61(0)4 1288 3739
E: alexanderlamont@milgate.com.au
W: milgate.com.au



ALEXANDER
LAMONT

Credits

Photography : Boonyakorn Pulsri, Marc Schultz
Styling : Naomi Daimaru, Hiro Namba
Graphic Design : Bunchornrat Tangkapon

All rights reserved. No part of this publication may be reproduced in any form or any means without prior permission in writing from Alexander Lamont Limited
© Alexander Lamont Limited



ALEXANDER
LAMONT